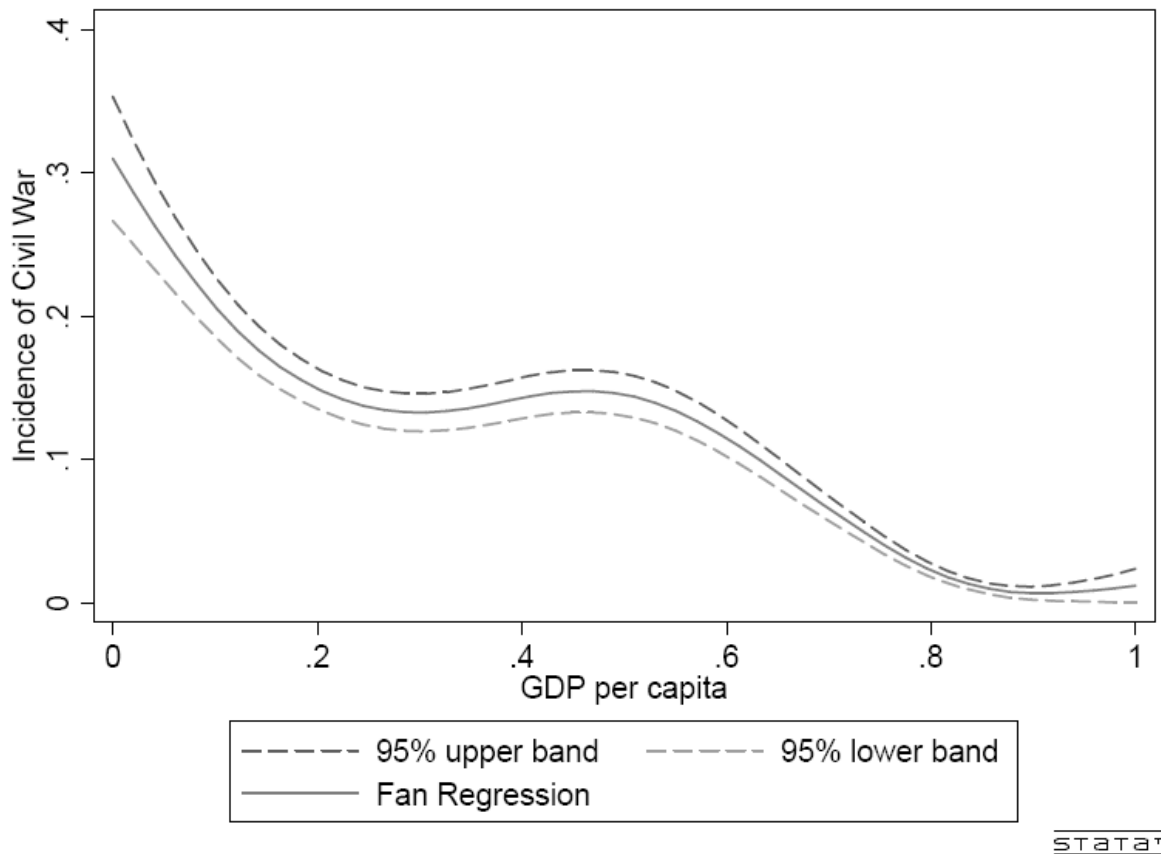


Figure 2: Incidence of civil war by country income per capita, 1960-2006



Notes: Figure 2 displays the results of a Fan regression of the incidence of civil war on GDP per capita percentiles (bandwidth=0.3, bootstrapped standard errors). Population and GDP data are drawn from the World Bank's World Development Indicators database. Civil war incidence is drawn from the UCDP/PRIO armed conflict database (Gleditsch, et al. 2002; Harbom and Wallensteen 2007).